

Immobilien-Exposé

**EXCLUSIVE NEW BUILDING IN CENTRAL
LOCATION "AM WINTERFELDT".
COMPLETION 2024!**

Objekt-Nr.:
189848-0

Wohnung zum Kauf

in 10781 Berlin - Schöneberg



Details

Purchase price per m²

11.024 €

Buyer's commission plus VAT.
ohne Käuferprov.

Living space (ca.)
33,91 m²

Rooms
1

Total area (ca.)
33,91 m²

Plot area (ca.)
6.017 m²

Garden area (ca.)
2.707 m²

Category
Luxury

Location in the property (Floor)
3

Number of floors
7

Bathrooms
1

Number of parking spots
79

Number of residential units
219

Number of commercial units
8

Number of terraces
1

Construction year
2022

Underground car park parking
spot purchase price
56.000 €

Number of underground car
park parking spots
79

Condition
First time occupation

Development
fully developed

Basement
Yes

Elevator
Passengers

Description

- prime location and historical location
- a total of 219 residential and 8 commercial units
- 50% of the apartments are barrier-free

- high quality equipment is provided
- underground car park with 79 parking spaces, purchase price € 56,000 per parking space
- cellar compartments, bicycle, stroller and wheelchair rooms

Equipment

- elevators from the underground car park to the penthouse level
- all apartments with balcony, exclusive penthouses with large terraces, ground floor apartments with small gardens
- underfloor heating in the residential units
- gas-powered combined heat and power unit
- air conditioning and chimney installation possible in the penthouses (optional)

Other

This property is being offered without any additional buyer's commission. We have concluded a fee-based brokerage contract with the owner and are representatives of the seller's interests, so that no brokerage contract subject to commission is concluded with a prospective buyer.

WHAT IS YOUR PROPERTY REALLY WORTH?

We offer a free property valuation by our experts.

Upon request, we will ensure a serious and timely sale.

You can also reach us on weekends on: 030-3277340.

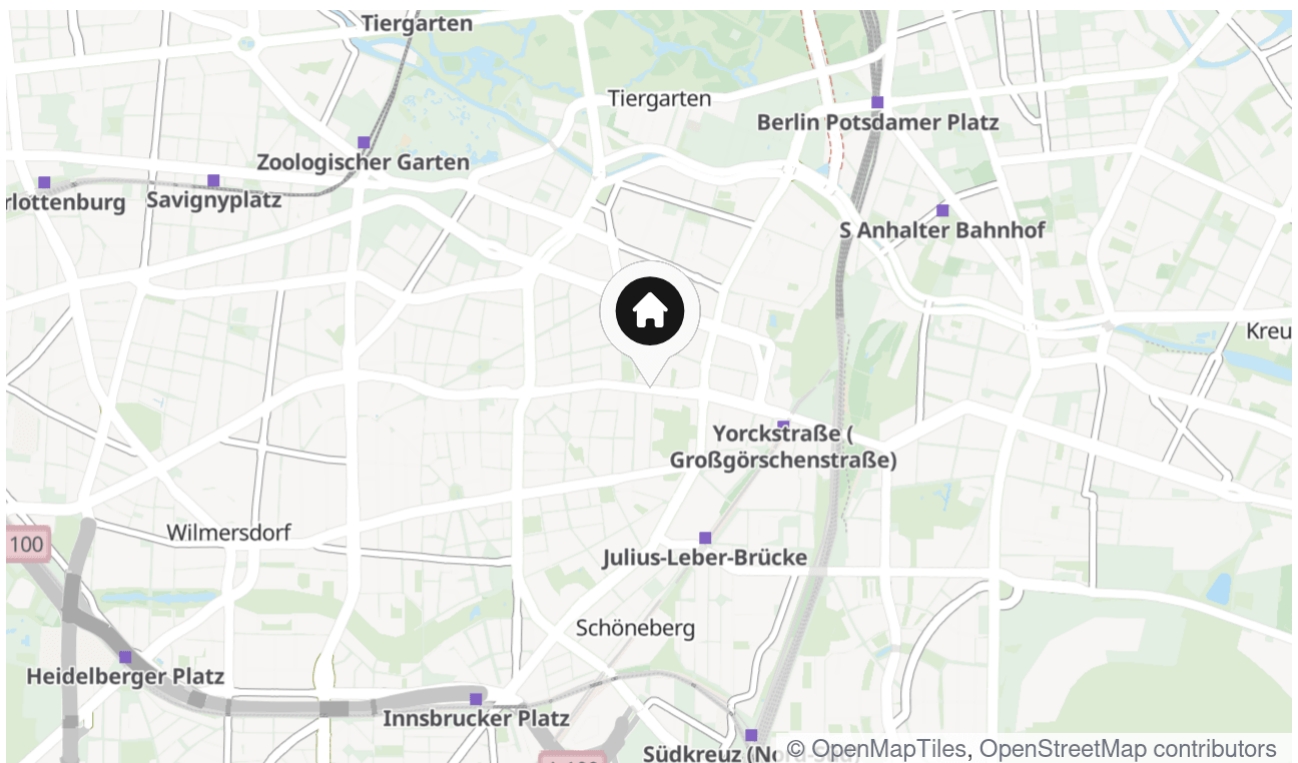
Our office on Kurfürstendamm is open for you 7 days a week.

You can find more interesting, commission-based and commission-free offers from property developers, condominiums to single-family houses and villas (private and commercial use) to high-yield rental houses for investors at www.bbi-immobilien.de

Lage & Umgebung

10781 Berlin - Schöneberg

- exposed location in the diverse and beautiful district of Schöneberg
- near Winterfeldtplatz with its famous weekly market, in the immediate vicinity of the Akazienkiez
- central location with excellent connections to public transport
- 3 underground stations (U1, U2, U3, U4, U7) with direct connections to Zoologischer Garten, Potsdamer Platz and Alexanderplatz can be reached on foot
- optimal infrastructure
- numerous cafés, restaurants and all kinds of shops in the immediate vicinity, e.g. around Nollendorfplatz
- KaDeWe, "Tauentzien" and Kurfürstendamm can be reached quickly



Die Karte zeigt den ungefähren Standort der Immobilie



Visualisierung (6)



Visualisierung (1)



Visualisierung (5)



Visualisierung (2)



Visualisierung (3)



Visualisierung (4)



Nollendorf Platz



Winterfeldtmarkt



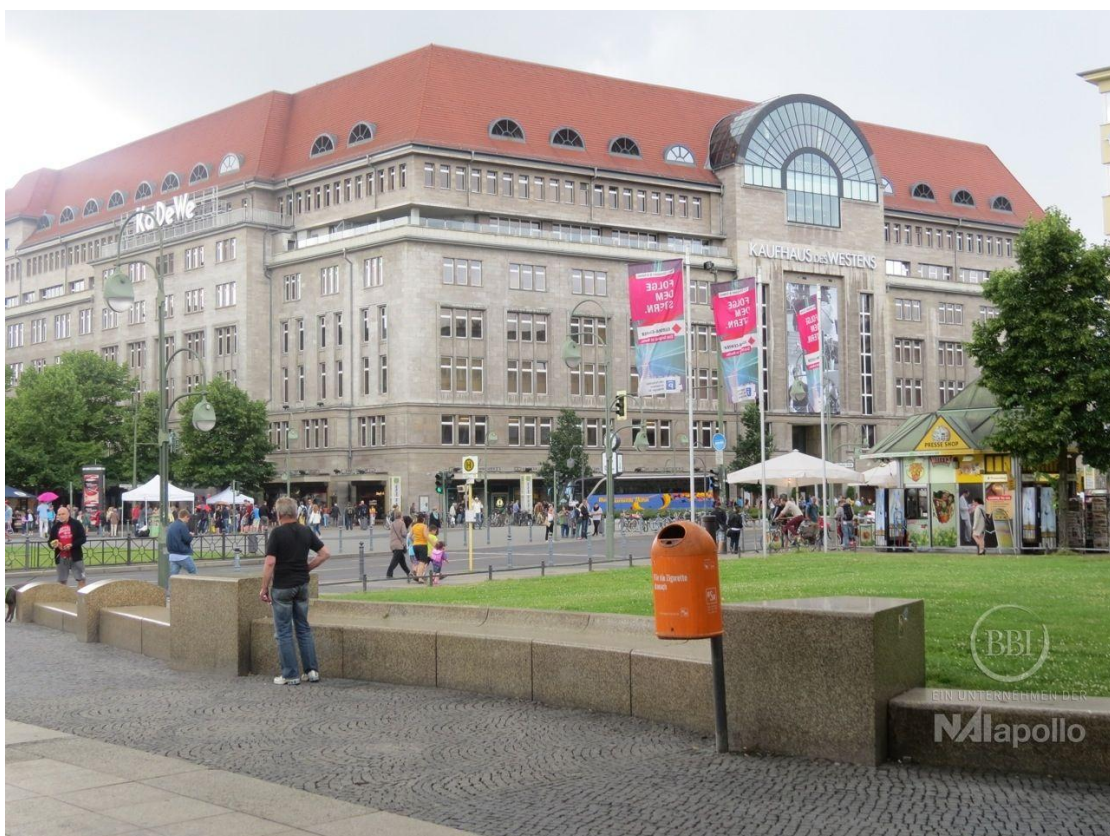
Winterfeldtmarkt



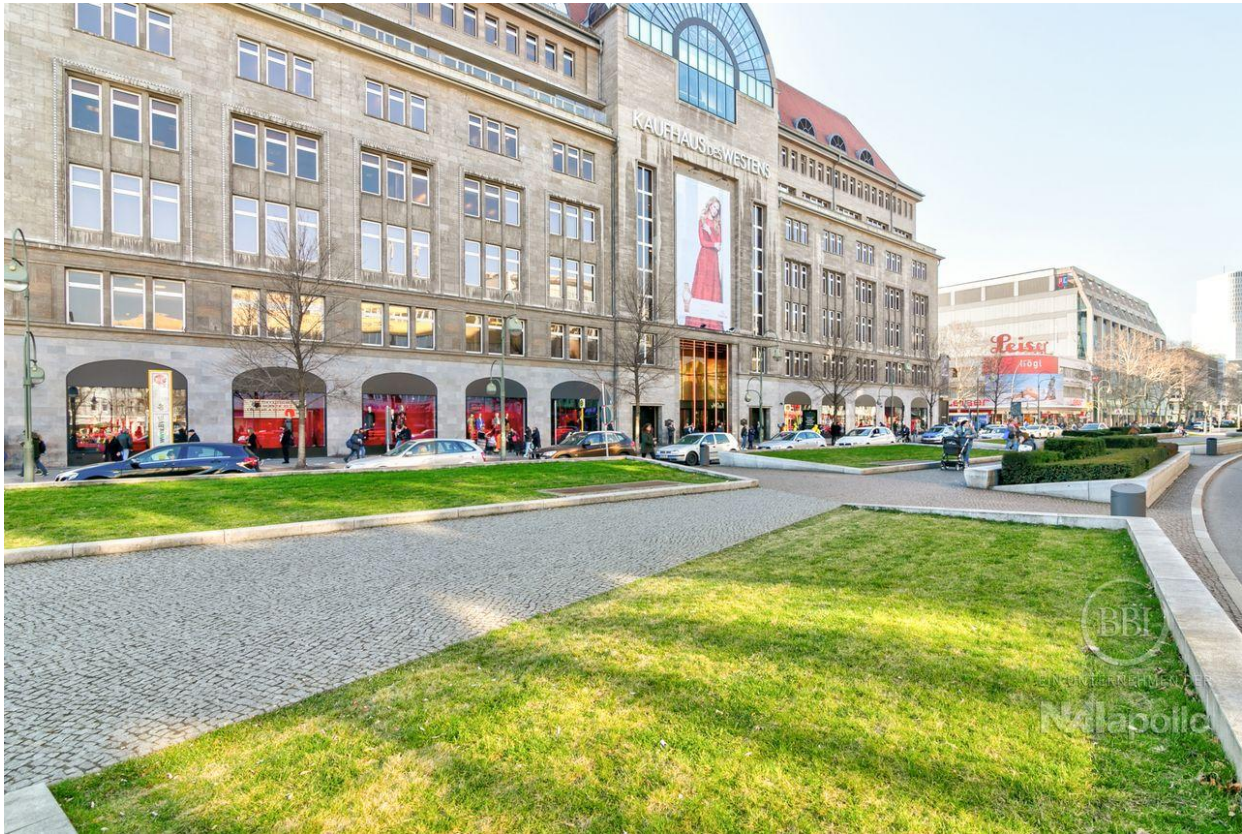
Cafe Einstein



Zwölf-Apostel-Kirche



KADEWE



Kadewe



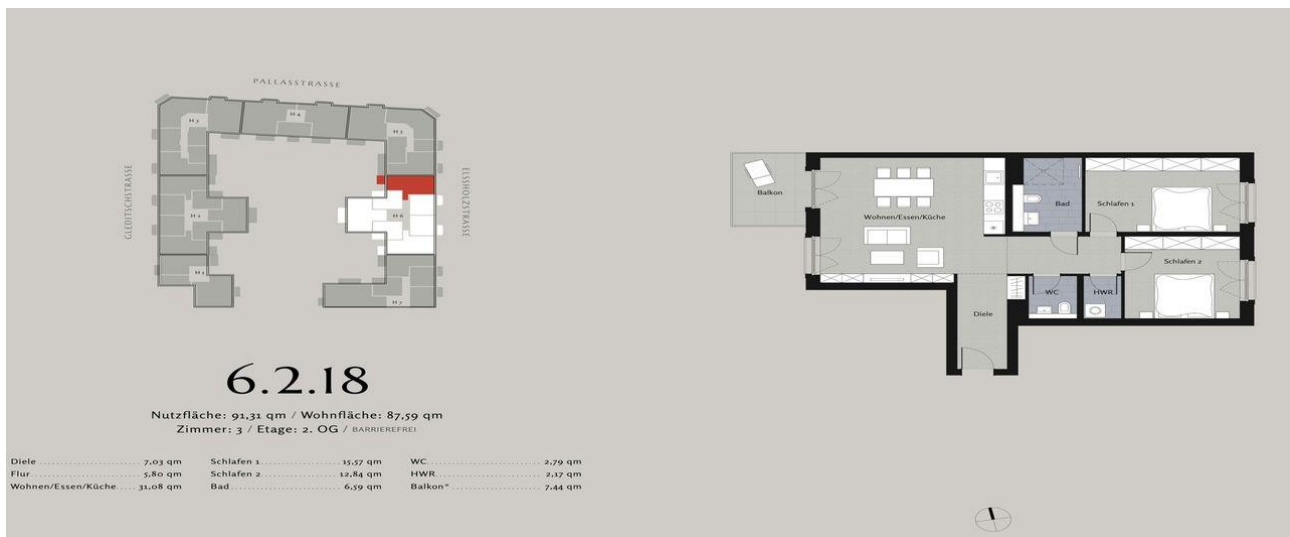
BEISPIELGRUNDRISS 1.1.06



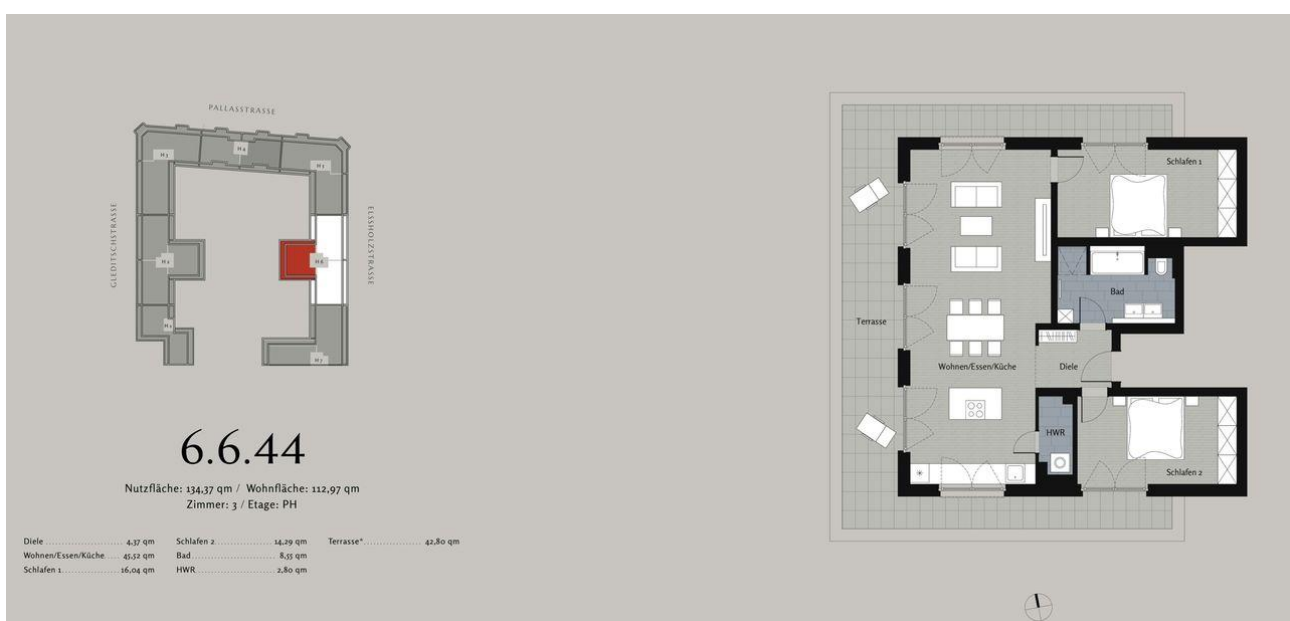
BEISPIELGRUNDRISS 5.3.13



BEISPIELGRUNDRISS 5.6.24



BEISPIELGRUNDRISS 6.2.18



BEISPIELGRUNDRISS 6.6.44



BEISPIELGRUNDRIS 7.0.03



BEISPIELGRUNDRIS 7.4.22

Kontakt

BBI Immobilien GmbH

Kurfürstendamm 178-179

10707 Berlin

Telefon: +49 (30) 32 77 34 0

E-Mail: abfrage@bbi-immobilien.info

Ihr Ansprechpartner

Firma BBI Immobilien GmbH

Impressum

en.bbi-immobilien.de/impressum/

Besuchen Sie uns im Internet

en.bbi-immobilien.de

